



The value of digital mapping in education goes far beyond geography. Across the National Curriculum, digital mapping and geographic information has a role in many subjects including for example biology (diversity projects), history (databases of historic buildings), economics (retail patterns) and ICT. From supporting field trips to local studies projects to forming a central element of geography teaching, digital mapping is an invaluable resource.

With MapsDirect for Schools, you can have that resource delivered online to every computer on your school network.

MapsDirect for Schools is an innovative, Internet-based solution that provides very detailed mapping of all of England, Scotland and Wales. Easy to use and manage, it gives your school the benefits of Geographic Information Systems (GIS) but only needs a standard web browser and Internet connection. No software or browser plug-ins need to be installed and little if no network and firewall configuration is required.

MapsDirect for Schools

A geographic ICT learning tool for the whole school
www.maps-direct.com/schools



Local interest - make learning personal

Using MapsDirect for Schools can bring interactive learning to the doorstep - literally. Its detailed local map data means that pupils can see their own houses, view where family and friends live, examine school grounds in full detail and study local streets and places of interest. Such data is proven to generate high levels of interactivity, discussion and participation.

Comprehensive data: Make Maps

Through the 'Make Maps' subscription service, MapsDirect for Schools provides access to the Ordnance Survey's most comprehensive and feature rich large-scale dataset, known as OS MasterMap®.

OS MasterMap is in full colour, making it easy for pupils to identify features on the map. It consists of over 400 million topographic features, including buildings, roads, gardens, fields and other features. Furthermore, the fact that it is delivered online rather than on CD ensures it is kept completely up-to-date.

- Pupils can instantly find map data covering their area of interest by typing in a postcode or place name.
- Maps can be printed out or copied into documents for school work.
- Interactivity is enabled through a range of map navigation tools along with some basic drawing and measurement tools. Additional GIS facilities will be added over time.

This service is ideally suited to schools wanting to get into GIS without the management complexity.

How to subscribe

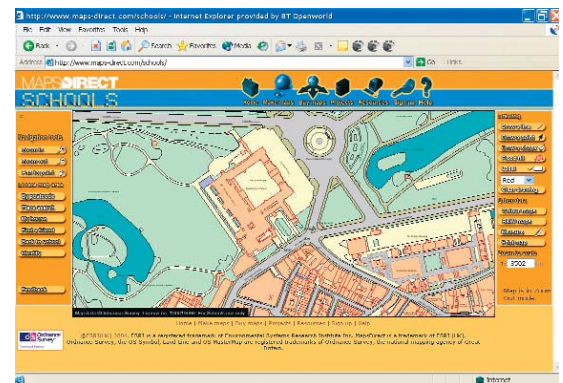
MapsDirect for Schools 'Make Maps' is a subscription based service. A single annual fee covers use of the service on every computer on your school network with an internet connection.

- Primary Schools £ 75 per year + VAT
- Secondary Schools £175 per year + VAT

Middle schools are 'deemed primary' or 'secondary' by DfES. To confirm your school's classification, see www.edubase.gov.uk.

A 20% discount is available for up-front orders for two year's use of the service.

To subscribe to the MapsDirect for Schools interactive mapping service visit the 'Sign Up' page at www.maps-direct.com/schools.



MapsDirect for Schools is developed and supplied by ESRI (UK). As pioneers and leaders in the development of Geographic Information Systems (GIS), solutions based on ESRI software and services are used by millions of people all around the world, every day



Continued over page >



Selected data: Buy Maps

If your school is already running a GIS system, you can use MapsDirect for Schools to purchase Ordnance Survey data. Land-Line® provides point and line representation of real world features, which can then be changed or added to through your GIS system, according to the functionality of the software you have chosen to purchase.

The Land-Line data set, which can be used in a variety of GIS software packages, is available as individual tiles, based on the pre-digital Ordnance Survey paper-map numbering system. Tiles cover 500m² on the ground for urban areas and 1000m² on the ground in rural areas.

You can select from more than 200,000 tiles of Land-Line data online in the Buy Maps section at www.maps-direct.com/schools. Simply place the order and the data is supplied by disk or email. Price per map tile is:

- 5 tiles or less £8.00 per tile + VAT
- 5 tiles or more £7.00 per tile + VAT
- 10 tiles or more £6.00 per tile + VAT
- 25 tiles or more £5.00 per tile + VAT

Technical Requirements

MapsDirect for Schools 'Make Maps' service requires Internet Explorer 5.0 or greater to be running on your computer. A high speed Internet connection is also recommended; each map request is rendered on the MapsDirect for Schools servers so map delivery performance is dictated by the speed of your Internet computer and computer memory and processor specification.



To use data obtained from the 'Buy Maps' service you need a GIS or similar software package that can read or convert data in National Transfer Format (NTF).

The desktop GIS solution available from MapsDirect for Schools service provider, ESRI (UK), is called the ArcView UK Schools Bundle and more information is available at <http://www.esriuk.com/solutions/schools/intro.asp>.

For other software packages that support NTF visit the Education section of the Ordnance Survey web site at www.ordnancesurvey.co.uk

MapsDirect for Schools: some key questions answered

Are there any restrictions on use of the data?

The data provided by MapsDirect for Schools is covered by Crown Copyright and may only be used in schools for teaching purposes.

Teachers using MapsDirect for Schools services are advised to familiarise themselves with the licence agreement which is provided online.

Can anyone at my school use MapsDirect for Schools?

MapsDirect for Schools is a service specifically designed for primary and secondary schools who can sign up online. Access may be available by special request to inspectors, advisors and those involved in teacher training. Please send your request to schools@maps-direct.com

Is the service available to other educational establishments?

The MapsDirect for Schools service is not available to sixth form colleges and higher education establishments who should contact Ordnance Survey Customer Services to discuss alternative options.

Can I obtain Ordnance Survey data through my local authority?

Possibly. Ordnance Survey has arrangements to supply digital map data to every local authority, and schools funded by local authorities are covered by the licence arrangements already in place.

However, availability differs between regions. Information about supply of map data for schools is available from an Ordnance Survey Liaison Officer (OSLO) in each local authority. If you do not know who the Liaison Officer is then the Ordnance Survey Customer Services on 023 8079 2006 or by email to customerservices@ordsvy.gov.uk can provide you with the relevant contact details.

With Maps Direct for Schools, you are guaranteed to receive the data you want quickly and easily.

My school isn't local authority funded.

What licensing options are available to me?

Independent schools have in the past had no defined mechanism for licensing and buying Ordnance Survey large scale data. MapsDirect for Schools now provides a highly effective option.

Find out more

You can find out more at www.maps-direct.com/schools, and also at <http://www.esriuk.com/solutions/schools/intro.asp>

ESRI (UK)
MapsDirect
 Prebendal House, Parsons Fee
 Aylesbury, Buckinghamshire HP20 2QZ
 e-mail: schools@maps-direct.com
 Tel: 01296 745500 Fax: 01296 745544
www.maps-direct.co.uk
www.esriuk.com

